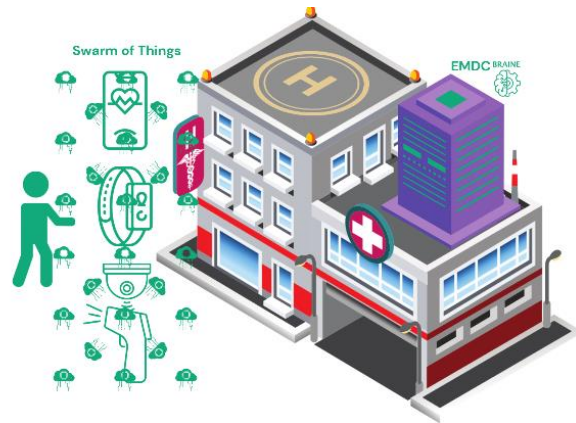


BRAINE Use Case 1: Healthcare assisted living / Smart Hospital

Objectives

- Using new patient AI Digital Twin technology on the BRAINE EMDC as an innovative medical services platform for decentralised health care. This platform is designed to be more efficient in delivering personalized real time care, while being secure, safe, reliable, GDPR compliant.
- Improving hospital processes by taking advantage of the proximity between high performance computing and patient-information data sources.



Requirements

- On-prem independent EMDC for high-end personalised care application services.
- Low latency and stability are critical for the healthcare services.
- Data privacy and security are a major concern in the healthcare sector.

Implementation

- The main technology used within the use case are multiple patient Digital Twins.
- The BRAINE EMDC allows user friendly adaptation to accommodate changes in HW and connectivity in the healthcare systems with minimum effort, costs and time.

Impact

- The BRAINE EMDC platform can serve as an intelligent medical services solution for a wide range of healthcare, caregiving, and health insurance organizations in the EU.
- Reducing the cost of AI healthcare services while retaining control of the patient health data locally.